



# GLOBEFAN TECHNOLOGY CO., LTD.

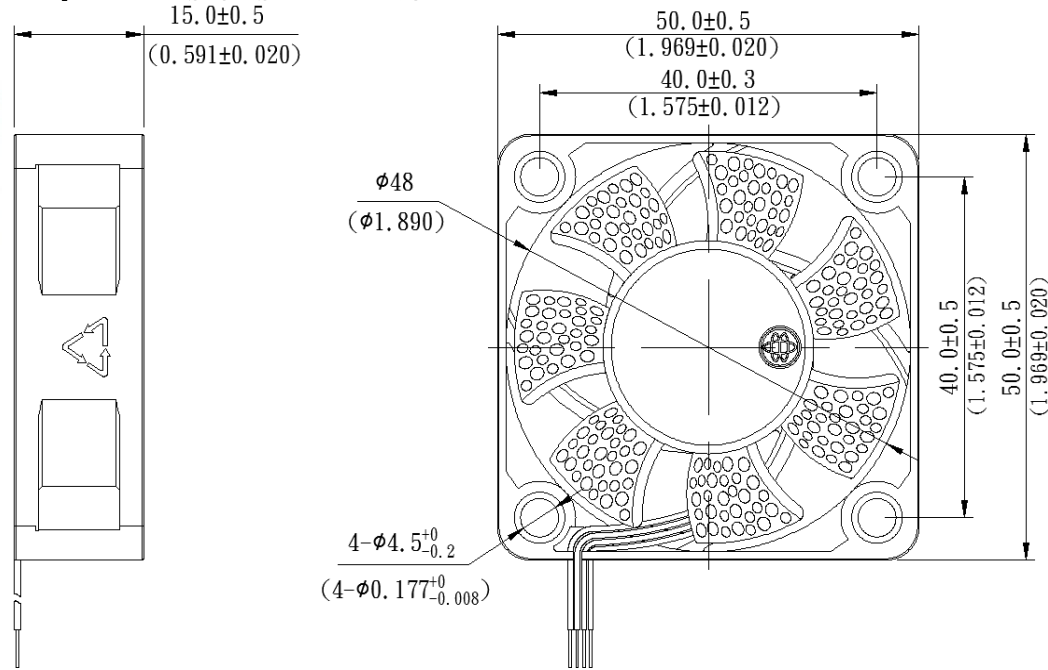
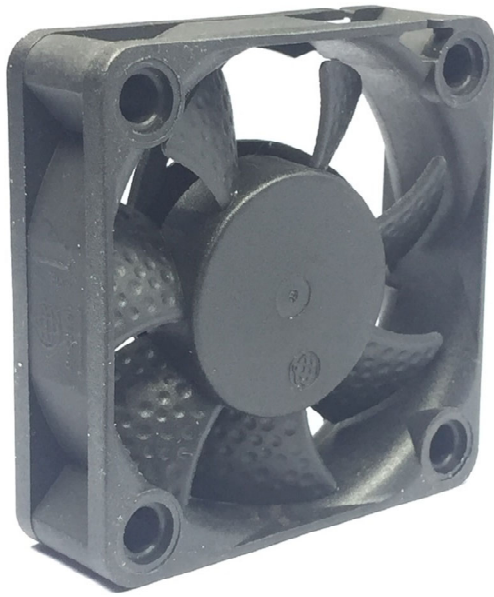
No. 28, 3 Lane Zhongxinjin Road, Jin Industry District Shoei Koou Village,

Da Laang Town, Dungguan City, Guangdong Province, China

Tel : +86 769 83182898~9

Fax : +86 769 83182897

## ◆ DIMENSIONS DRAWING



### \* BEARING TYPE

- Ball bearing
- Sleeve bearing

### \* Electrical Function

- Frequency Generator Output Signal
- RD (Lock Detection) Output Signal
- PWM (Pulse Width Modulation)

### \* Material

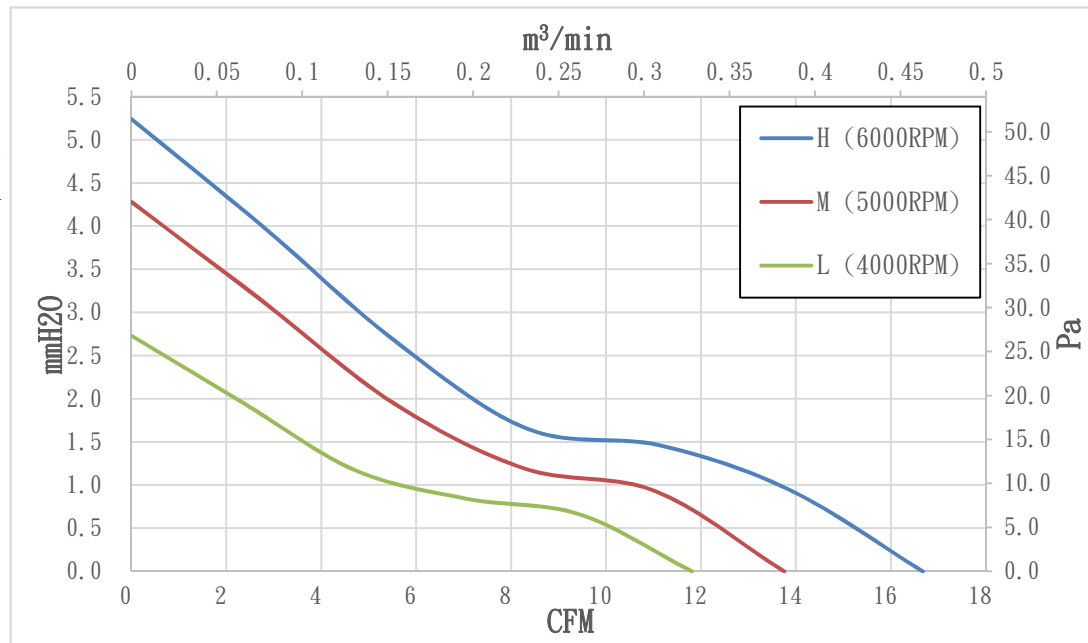
Impeller: Plastic (PBT 30%GF)  
Frame : Plastic (PBT 30%GF)

### \* Lead wires

UL1007 28AWG or Equivalent  
Black Wire Negative (-)  
Red or Yellow Wire Positive (+)  
Green Wire Signal (FG)  
Blue Wire (PWM)

### \* Weight : 25.6g (0.90 oz)

## ◆ 50x50x15mm DC Axial Fan P/Q Curves (At rated speed)



MODEL	Operating Voltage Range	Rated Voltage	Rated Current	Rated Input Power	Speed	Maximum Air Flow		Maximum Air Pressure		Noise
Part No.	VDC	VDC	Amp	Watts	R.P.M	m <sup>3</sup> /min	CFM	mmH <sub>2</sub> O	Pa	dB(A)
B/S0501512HGP-4M	7 ~13.8	12	0.20	2.4	6000±10%	0.47	16.67	5.24	51.39	33.3
B/S0501512MGP-4M	7 ~13.8	12	0.15	1.8	5000±10%	0.39	13.75	4.28	41.97	29.1
B/S0501512LGP-4M	7 ~13.8	12	0.10	1.2	4000±10%	0.33	11.81	2.73	26.77	23.7

\* Function type is optional.

\* The max. air flow and speed are measured in free air; max. air pressure is measured at close to zero air flow.

\* Noise is measured in anechoic chamber in free air, one meter from intake side.

\* All readings are typical values at rated voltage.

\* Specifications are subject to change without notice.